



---

THE CITY OF BLUFFDALE  
2222 West 14400 South • Bluffdale, Utah 84065 • (801) 254-2200 • [www.bluffdale.com](http://www.bluffdale.com)

## **NOTICE OF PUBLIC HEARING**

*You are receiving this notice because you are an affected entity or record owner of property within one thousand feet (1000') of the subject property.*

Notice is hereby given that a **public hearing** will be held before the Bluffdale Planning Commission on **Wednesday, November 3, 2021**, which will **begin at 6:00 p.m., or as soon as thereafter as possible** and before the City Council on **Wednesday, November 17, 2021**, which will **begin at 7:00 p.m., or as soon thereafter as possible** for the purpose of receiving public comment on the following land use applications:

**Applicant(s):** D&H Stewart Family Holdings LLC  
**Application #:** 2021-43  
**Application Name:** Tri City Center General Plan Land Use Map and Zoning Map Amendments  
**General Plan:** From Very Low Density Residential to Commercial  
**Zoning:** From R-1-43 Residential to GC-1 General Commercial  
**Location:** 13855 and 13937 South 2950 West  
**Acreage:** 5.59 acres  
**Request:** To amend the General Plan Land Use Map and Zoning Map for future commercial uses.

The hearing is scheduled in connection with regularly scheduled meeting of the Bluffdale City Planning Commission and City Council. If you have any relevant comments or concerns, there are several ways to participate in these meetings as follows:

1. **View** meeting on the City's website at [www.bluffdale.com](http://www.bluffdale.com).
2. **Email** your comments to [planningmeetingcomment@bluffdale.com](mailto:planningmeetingcomment@bluffdale.com) for the Planning Commission or [councilmeetingcomment@bluffdale.com](mailto:councilmeetingcomment@bluffdale.com) for the City Council and include the name of the Applicant(s) in the subject line of the email.
3. **Mailed** written comments will be accepted. Please mail to the following:

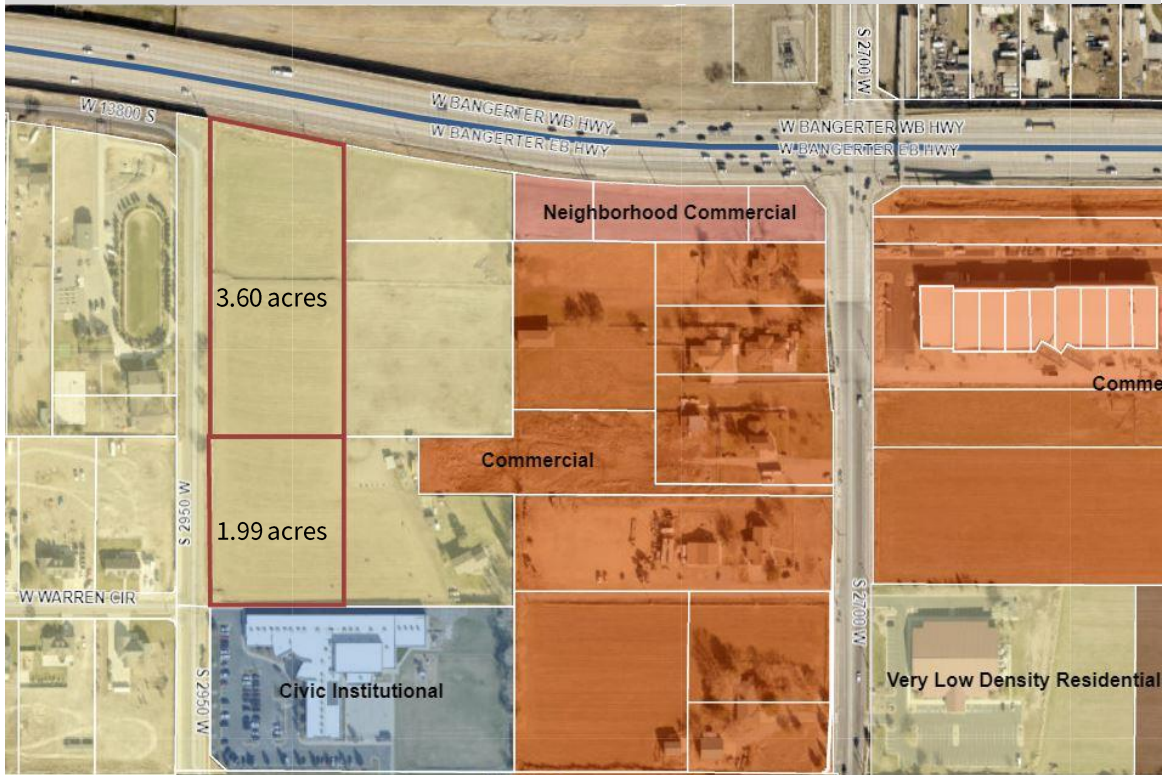
Jennifer Robison, Senior Planner  
City of Bluffdale Planning  
2222 West 14400 South  
Bluffdale, Utah 84065

For further information, please contact Jennifer Robison at [jrobison@bluffdale.com](mailto:jrobison@bluffdale.com) or 801-849-9421.

In compliance with the Americans with Disabilities Act, individuals needing assistance or other services for this meeting should contact Bluffdale City Hall at least 24 hours in advance of such meeting at 801.254.2200. TTY 7-1-1. The City website is located at [www.bluffdale.com](http://www.bluffdale.com).

Subject Property Location:  
Approximately 13855 and 13937 South 2950 West

**CURRENT GENERAL PLAN LAND USE MAP**



**CURRENT ZONING MAP**

