



THE CITY OF BLUFFDALE
2222 West 14400 South • Bluffdale, Utah 84065 • (801) 254-2200 • www.bluffdale.com

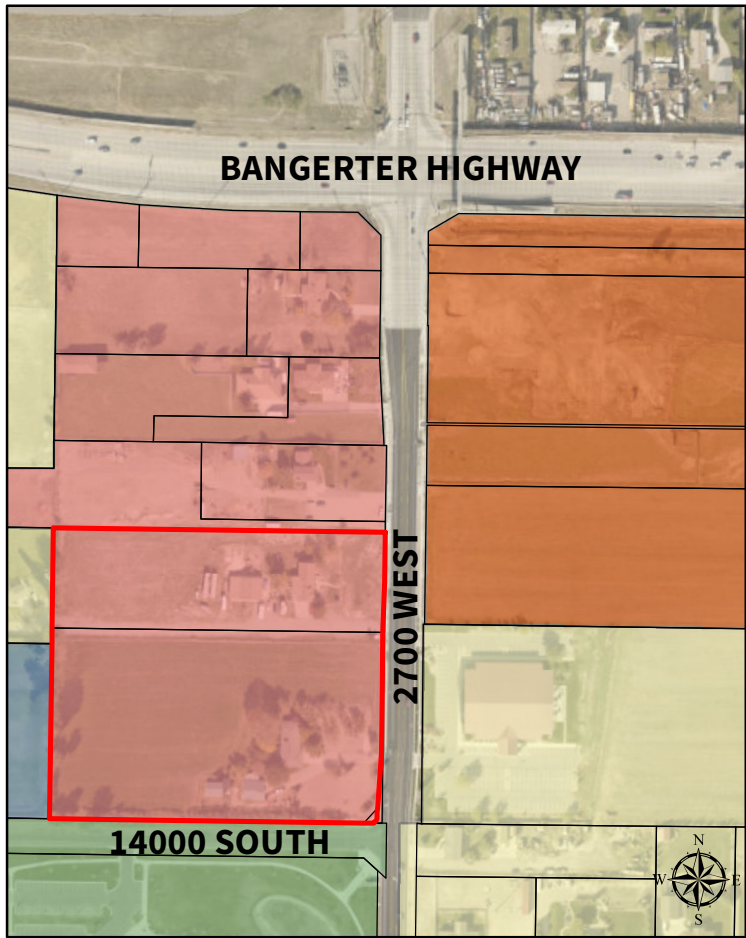
NOTICE OF PUBLIC HEARING

Notice is hereby given that a public hearing will be held before the Bluffdale City Planning Commission and Bluffdale City Council on **Wednesday, September 4, 2019** and **Wednesday, September 11, 2019**, respectively, at the Bluffdale City Hall, 2222 West 14400 South, Bluffdale, Utah, for the purpose of receiving public comment on the following applications:

- Application 2019-34 - Request to amend the General Plan Land Use Element Map for approximately 7.75 acres located at 13930 South and 13974 South 2700 West from Neighborhood Commercial to Commercial. Jeremy Bitner and David Exeter, Applicants, Caitlyn Miller, staff presenter.
- Application 2019-35 – Request to amend the Official Zone Map for approximately 7.75 acres located at 13930 South and 13974 South 2700 West from Neighborhood Commercial (NC) to General Commercial (GC-1). Jeremy Bitner and David Exeter, Applicants, Caitlyn Miller, staff presenter.

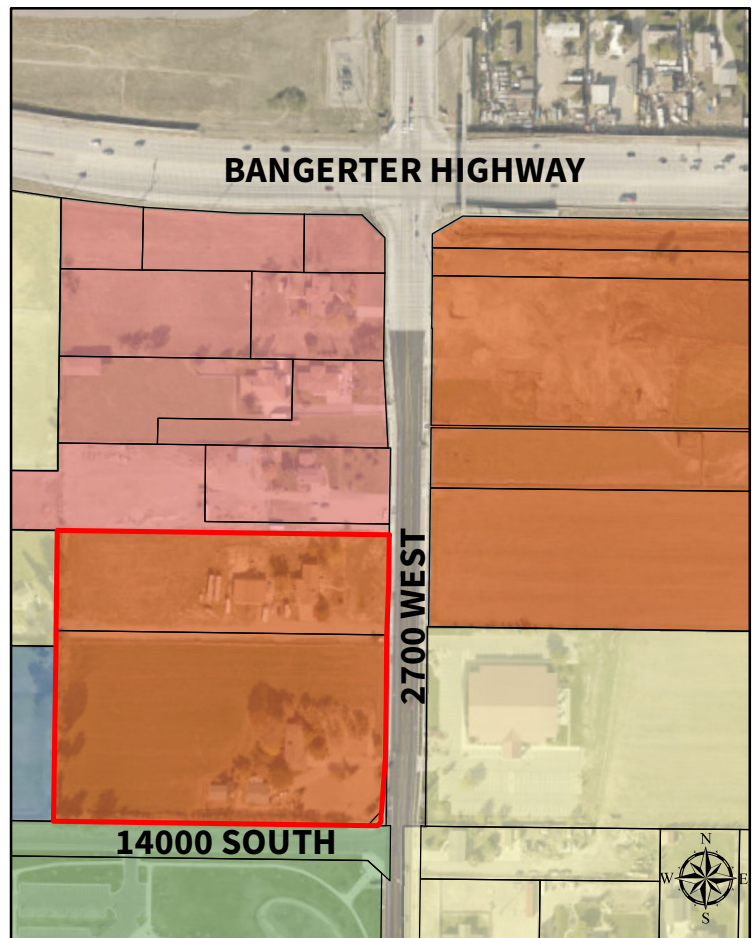
The hearing before the Bluffdale City Planning Commission is scheduled to begin at **begin at 6:30 p.m., or as soon thereafter as possible** and the hearing before the Bluffdale City Council is scheduled to **begin at 7:00 p.m., or as soon thereafter as possible**. If you cannot attend, please feel free to provide comments in writing. In compliance with the Americans with Disabilities Act, individuals needing assistance or other services for this meeting should contact Bluffdale City Hall at least 24 hours in advance of such meeting at (801) 254-2200. TTY 7-1-1.

For more information regarding this application, or to provide written comments if unable to attend the hearings, you may contact Caitlyn Miller, Senior Planner, at **(801) 849-9422** or **cmiller@bluffdale.com**.



Existing General Plan Land Use Map:
Neighborhood Commercial

Existing Zoning Map:
Neighborhood Commercial (NC)



Proposed General Plan Land Use Map:
Commercial

Proposed Zoning Map:
General Commercial (GC-1)

